

CUSTOM LENGTH TOWEL BARS

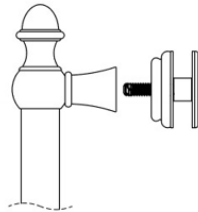
Towel bars from some design suites can be customized by shortening or replacing the towel bar tube(s). For replacement tubes see items 507.301 and 507.302 on portalshardware.com.

1. Disassemble

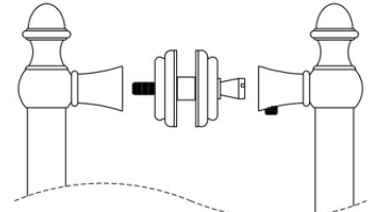
1. Disassemble the product:

- For singles, remove the backplates, along with rosettes and washers.
- For doubles, loosen the set screws with a 1/8" Allen wrench to free one side of the pull and then remove the conehead screws, rosettes and washers from the other side of the pull.

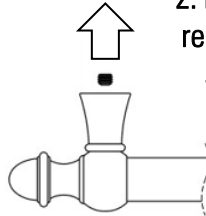
Single



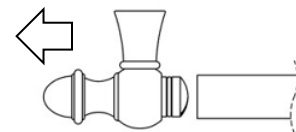
Double



2. Loosen or remove set screws

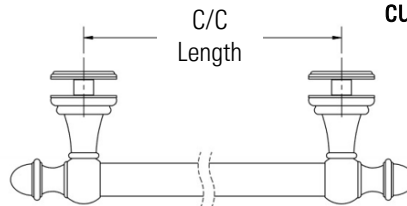


3. Remove posts

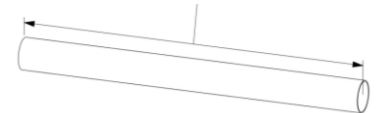


- For L.11, L.21, and L.30 products, use a 1/8" Allen wrench to loosen set screws within each post. These set screws secure the posts to the tube.

4. Calculate tube length & cut tube



$$\text{Tube Length} = \text{C/C Length} \pm \text{Value in Table}$$



- Pull each post from the tube(s) to remove. They are held in place by friction.

- Consult the table and calculate tube length based on intended center-to-center length.

- Cut tubing to calculated length using a non-ferrous saw blade for cutting brass and reassemble product. Be sure to tighten any set screws within the posts if loosened in Step 2.

Suite	Part # Tube Profile	Tube Length Based on Intended C/C Distance X
L.10 Symphony	507.301 $\varnothing 9/16"$	$X - 1/8"$
L.11 Symphony	507.302 $\varnothing 3/4"$	$X + 5/16"$
L.21 Sonata		
L.30 & 31 Concerto		
L.40 & 41 Opus	507.301 $\varnothing 9/16"$	$X - 4-3/4"$
L.50 Rondo		$X - 3-1/8"$

Note: Aria towel bars can also be shortened, but we do not offer square replacement tubes: Aria tube length = c/c length – 3.5"